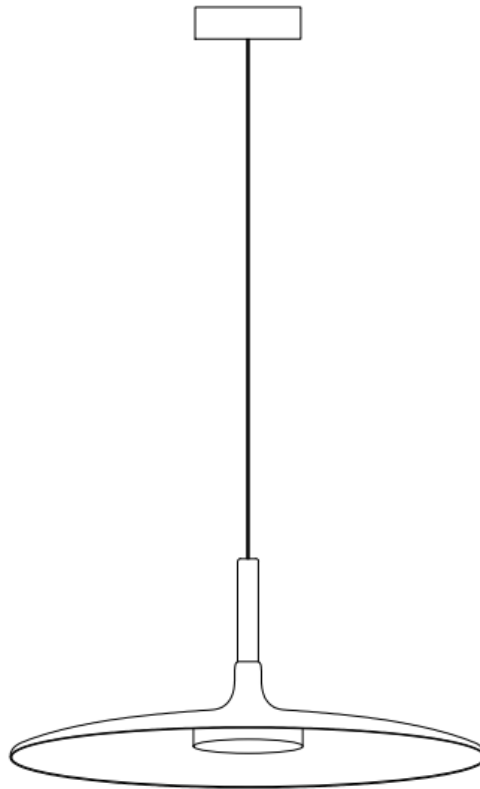
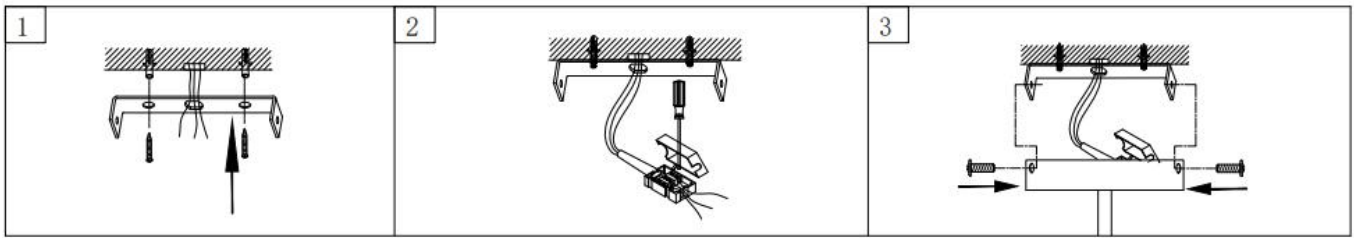


CP0146



Installation instructions

1. Please wear gloves during the installation.
2. Do not install on ceiling which is damp or with wet lime water.
3. Cut off the electricity before installation in case of being shocked.
4. Do not cut off the electricity before washing or repairing, and use the scour without causticity.
5. According to the design drawings, determine the pendant lamp installation position.
6. Put the pendant lamp base on the ceiling, with a pencil to draw the position of the hole.
7. According to the base installation hole, hammer on the ceiling.
8. Put an expansion tube in the place where the holes are well made to fix the screws.
9. Stick the base to the ceiling, adjust the level, install screws.
10. Press the power cord into the connector in the light box.
11. If the light needs to be cleaned, should use the dry antistatic fabric, clean it in one direction.
12. Try to turn on the light.
13. Please cut off the electricity and wait until the bulb gets cooling before replacing the bulb in case of being burned.