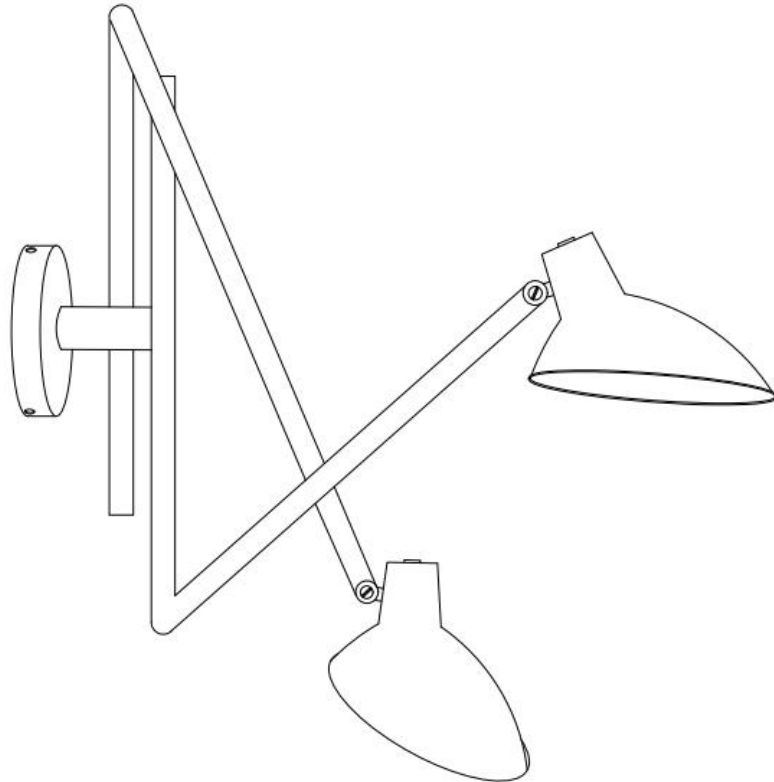
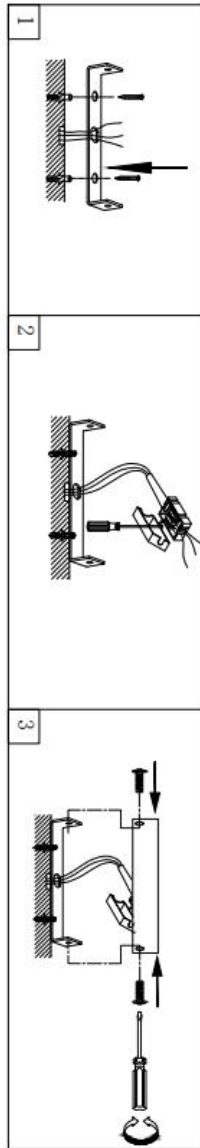


CW0030



Installation instructions

1. Make sure the power off and read this instruction before installation, and make sure the fixture can work well under the specification. If you have no electrical experience, you must let a qualified licensed electrician help you to install. This light is only suitable for indoor use. Do not use in damp environment.
2. Please wear gloves during the installation
3. According to the design drawings, determine the wall lamp installation position.
4. Put the wall lamp base on the wall, with a pencil to draw the position of the hole.
5. According to the base installation hole, the hammer on the wall.
6. Put an expansion tube in the place where the holes are well made to fix the screws.
7. Stick the base to the wall, adjust the level, install screws.
8. Press the power cord into the connector in the light box.
9. If the light needs to be cleaned, should use the dry antistatic fabric, clean it in one direction.
10. Try to turn on the light.